



1300 Groomer

Owner's Manual & Parts Book

Grouser Products

755 2nd Ave NW - West Fargo, ND 58078

Phone: 1-800-747-6182

Fax: 1-701-282-8131

E-mail: grouser@grouser.com

Website: www.grouser.com

Purchase Date
Serial Number
Model Number
Tractor Model
Dealer

Description	Page
Welcome To The Owner _____	2
Safety Precautions & Torque Specifications _____	3
Decals _____	4
Maintenance & Lubrication _____	4
1300 Groomer Blade _____	5
Angle System _____	6-7
Hydraulics _____	8-9
Tilt Plate Adjustment _____	10
Hydraulic Schematics _____	11
Contact Us, Improvements, & Warranty _____	12

Thank you for your recent purchase of a Grouser Blade. Welcome to the family of satisfied Grouser blade owners. Grouser Products is committed to offering quality products to help professionals in their daily jobs. We are also committed to providing you the highest level of customer satisfaction possible. Again, thank you for your patronage. We look forward to serving you.

This manual contains information concerning the operation, adjustment, safety and maintenance of the blade. You have purchased a dependable, long lasting piece of equipment. You can expect to receive long lasting performance and long service built into our products with proper care and operation. Please have all operators read and understand this manual carefully. Keep the manual available for reference. If, for any reason, you have questions or comments, we would be happy to hear from you. Call our toll-free number, 800-747-6182, or send us an e-mail at info@grouser.com. You can expect us to respond to your e-mail in a timely manner.

Caution: This Is A Non-Trip U-Blade

The 1300 Groomer blade is a heavy-duty blade that does not contain a safety trip mechanism found in snow blades. Using this blade as a snow blade could cause serious damage to the blade, the machine, or the operator when you strike an immovable object. Grouser Products will not warranty this blade if damage occurs while pushing snow.

A careful operator is the best operator. Most accidents can be avoided by observing certain precautions. To help prevent accidents, read and take the following precautions before operating this equipment. In addition, please follow all safety and operational instructions of your tractor manufacturer.

The 1300 Groomer Blade:

1. The 1300 Groomer Blade should be operated only by those who are responsible and instructed to do so.
2. Read the owner's manual carefully before using this equipment. Lack of operating knowledge can lead to accidents.
3. Keep the 1300 Groomer Blade maintained in reliable and satisfactory condition to ensure your safety.
4. Make sure the area is clear of people before moving any equipment.
5. Do not modify or permit anyone else to modify or alter the equipment and its components without first consulting Grouser Products.
6. Lower the blade to the ground when not in use.

Servicing the 1300 Groomer Blade:

1. Read and follow all safety instructions provided by the tractor manufacturer.
2. Always use proper personal safety gear when performing maintenance on equipment.
3. Before servicing, relieve hydraulic pressure, stop engine and fully engage parking brake.
4. Escaping hydraulic fluid under pressure can penetrate skin causing serious injury. If fluid is injected into skin, obtain medical attention immediately.
 - DO NOT use your hand to check for leaks. Use a piece of cardboard or paper to search for leaks.
 - Stop the engine and relieve pressure before connecting or disconnecting lines.
 - Tighten all connections before starting the engine or pressurizing lines.

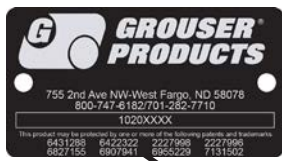
Storing the 1300 Groomer Blade:

1. Thoroughly clean the 1300 Groomer Blade before storage. Use paint where necessary to prevent rust.
2. Check the 1300 Groomer Blade for worn or damaged parts. Install new parts as required.
3. Lubricate all pins and joints.

Tighten all bolts to the values listed below unless otherwise noted. Refer to the parts lists for proper length and grade of the bolts.

Size	Torque - Dry (ft-lbs)			
	SAE Grade 5		SAE Grade 8	
	UNC	UNF	UNC	UNF
5/16	17	19	24	27
3/8	30	35	45	50
7/16	50	55	70	80
1/2	75	85	110	120
9/16	110	120	150	170
5/8	150	170	210	240
3/4	260	300	380	420
7/8	430	470	600	670
1	640	720	910	1020

Size	Torque - Dry (ft-lbs)
	Grade 10.9
M18 x 2.50	284
M20 x 2.50	401
M22 x 2.50	547
M24 x 3.00	694



WARNING
 Cancer and Reproductive Harm
 For more information go to
www.P65Warnings.ca.gov
 27-40962

PN: 27-40962

WARNING
PINCH AREA
 Keep away
 Failure to comply could
 result in death or serious
 injury.
 27-2409

PN: 27-2409

STOP

PROPER TOP LINK INSTALLATION

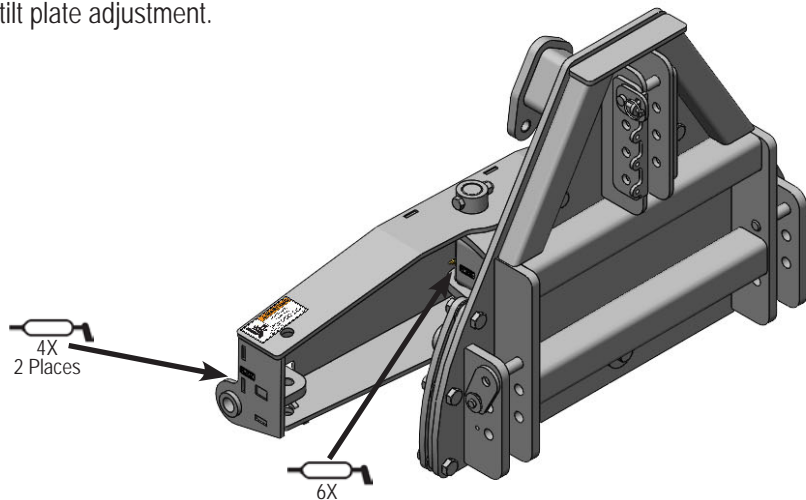
D	GROUSER HITCH
C	Pin Locations: 2 - A
B	3 - B
A	
	FACTORY HITCH ISO CAT II
	Pin Locations: 1 - B
	2 - C
	3 - D
3	FACTORY HITCH ISO CAT IIIN
2	Pin Locations: 1 - C
1	2 - D

PLEASE VERIFY TOP LINK ROTATION BEFORE IN SERVICE
FAILURE TO FOLLOW MAY RESULT IN DAMAGE

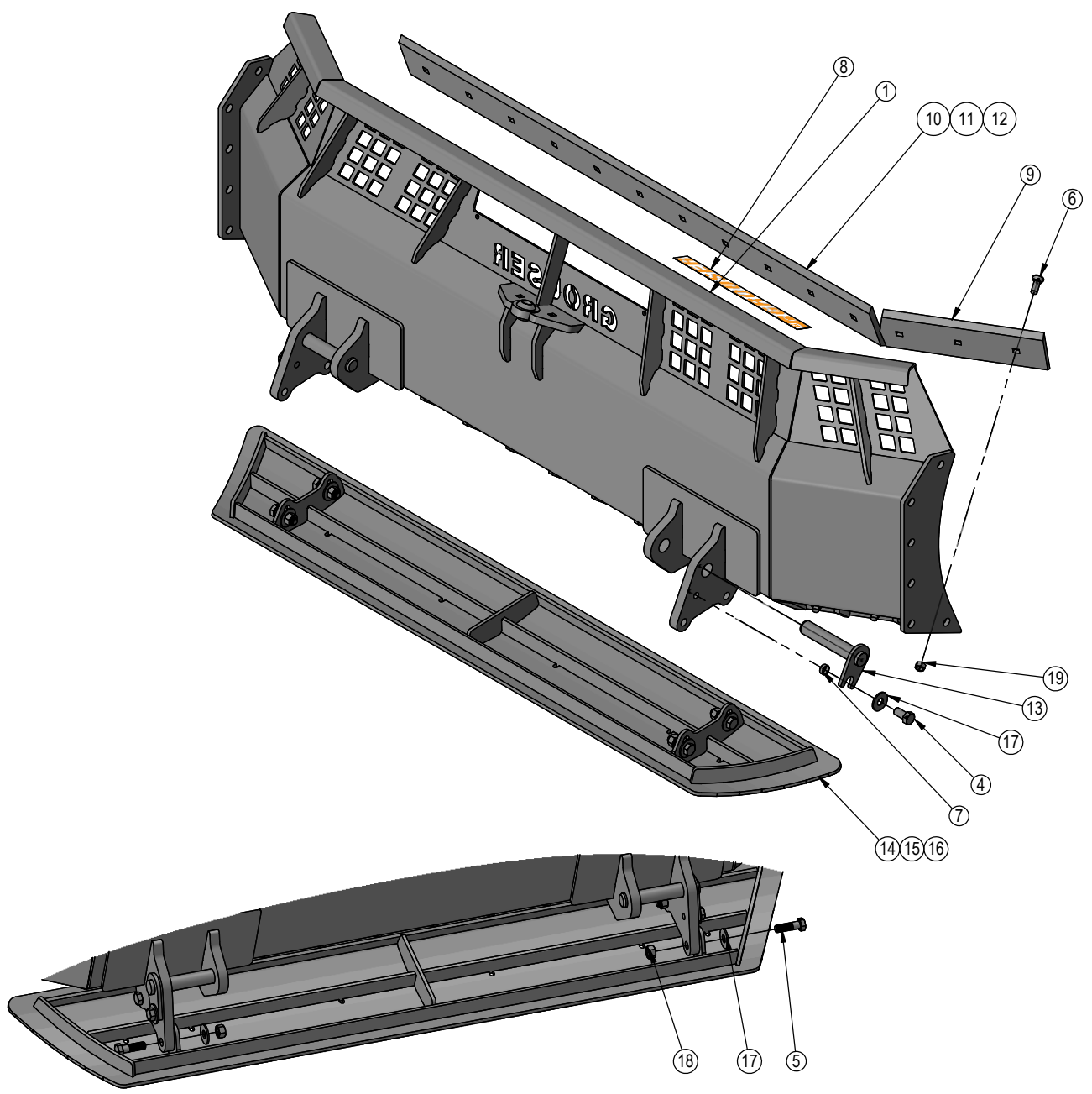
27-42496

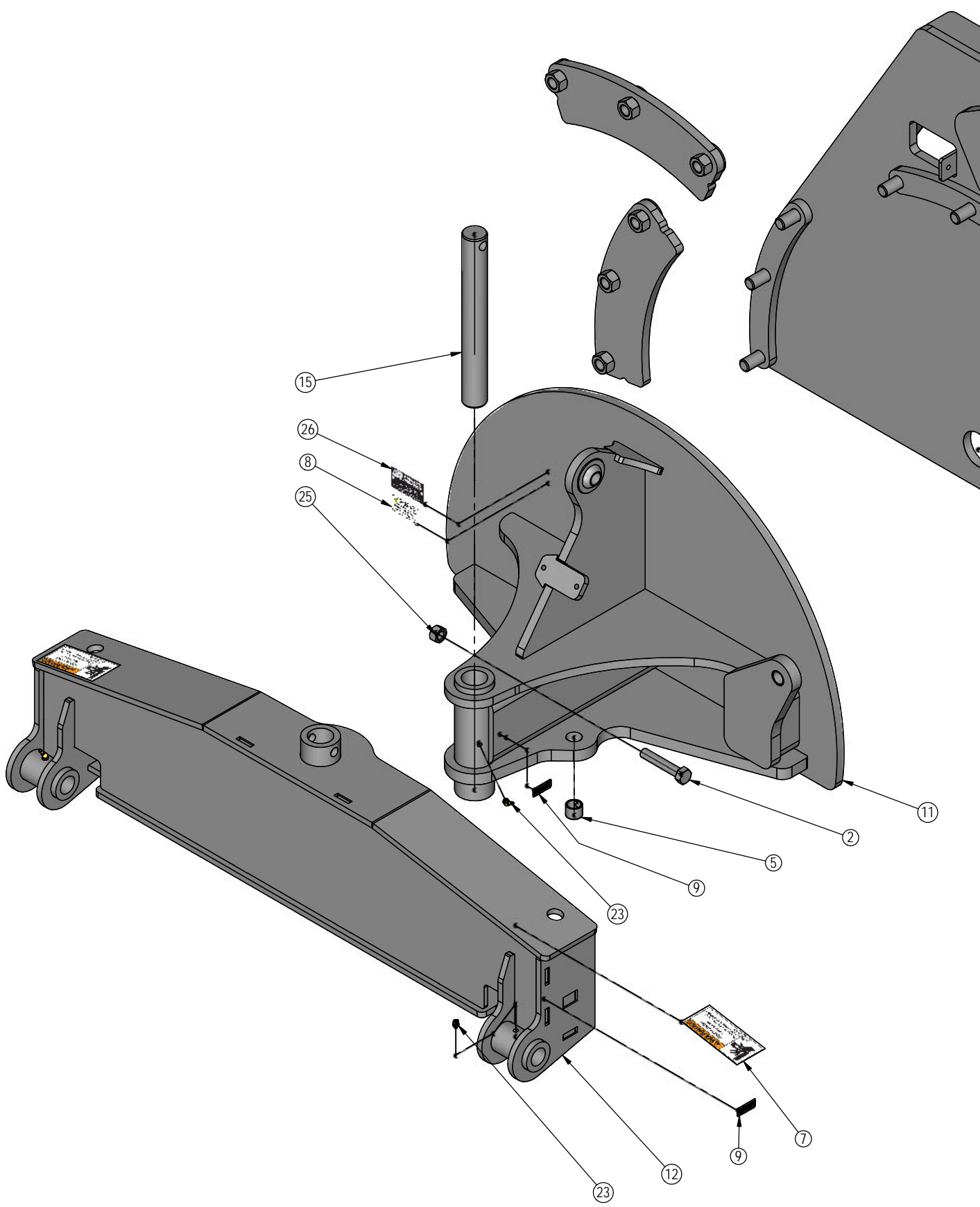
Due to the harsh environment this equipment operates in, the following tasks should be performed every 10 hours or less.

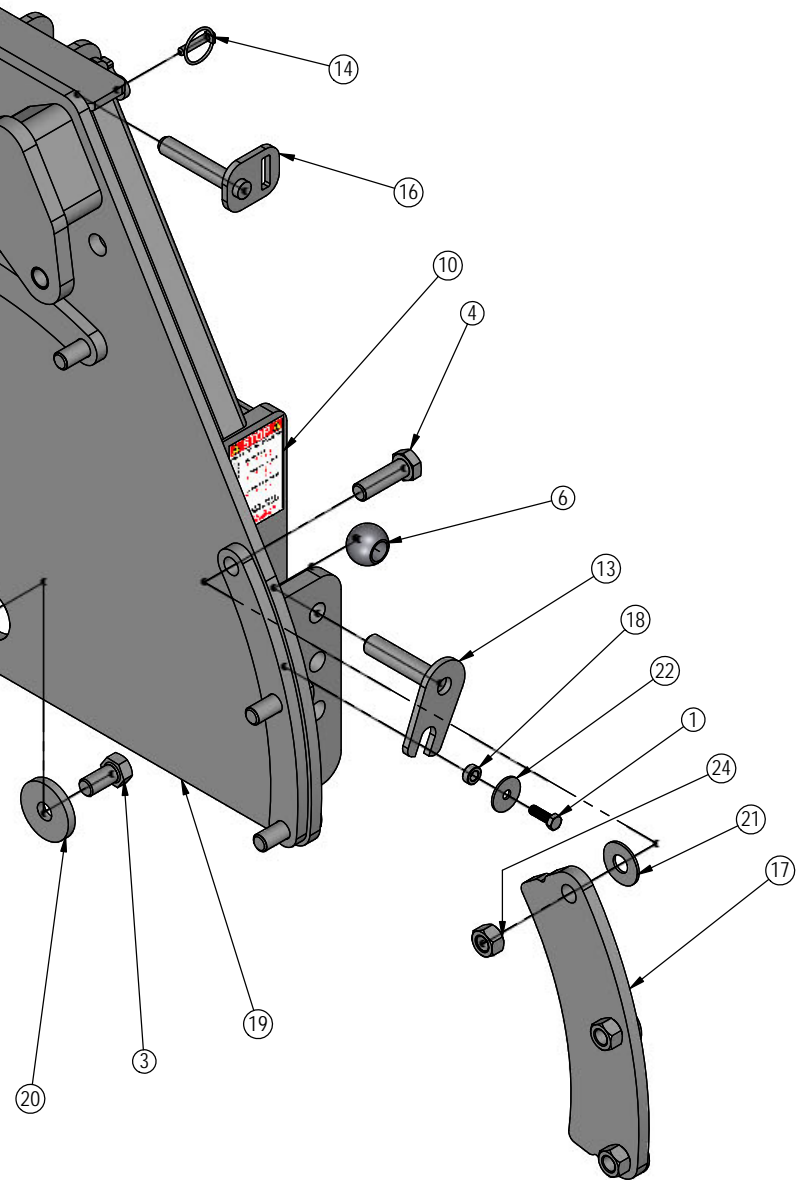
- Inspect all equipment before operation for existing or potential damage.
- Lubricate all joints with high quality grease. See below for grease locations.
- Inspect all bolts, and tighten any loose bolts to torque specifications on page 3.
- Check replaceable cutting edge for wear ensuring there is enough material to prevent permanent damage to the Groomer Blade.
- Check hydraulic cylinders and hoses for damage or leaks. For replacement parts, see hydraulic pages 8-9.
- Make sure all non-rotating pins are secured properly.
- Inspect all decals and order replacement decals from your dealer if any are damaged or worn.
- Inspect all tilt-ways for wear. See page 10 for tilt plate adjustment.
- Replace parts with original parts only.



ITEM NO.	PART NO.	DESCRIPTION	42790-08-A/QTY.	42790-09-A/QTY.	42790-10-A/QTY.
1	15-42790-08	Blade Weld	1	-	-
2	15-42790-09	Blade Weld	-	1	-
3	15-42790-10	Blade Weld	-	-	1
4	16-20216	3/4" x 1-1/2" Hex Bolt Gr 5 NC	2	2	2
5	16-20220	3/4" x 2-1/2" Hex Bolt Gr 5 NC	4	4	4
6	16-21666	5/8" x 1-3/4" Plow Bolt Gr 5 NC	17	19	21
7	19-13515	Spacer, NR Pin	2	2	2
8	27-9504	Grouser Horizontal Decal	1	1	1
9	29-13844	Cutting Edge, End	2	2	2
10	29-13845	66" Cutting Edge	1	-	-
11	29-7950-78	78" Cutting Edge	-	1	-
12	29-7950-90	90" Cutting Edge	-	-	1
13	43-42909	Pin Weld	2	2	2
14	50-42910-08	Skid Shoe	1	-	-
15	50-42910-09	Skid Shoe	-	1	-
16	50-42910-10	Skid Shoe	-	-	1
17	57-20747	3/4" Flat Washer	6	6	6
18	70-20607	3/4" Center Lock Hex Nut Gr 2 NC	4	4	4
19	70-20646	5/8" Hex Top Lock Nut Gr 5 NC	17	19	21



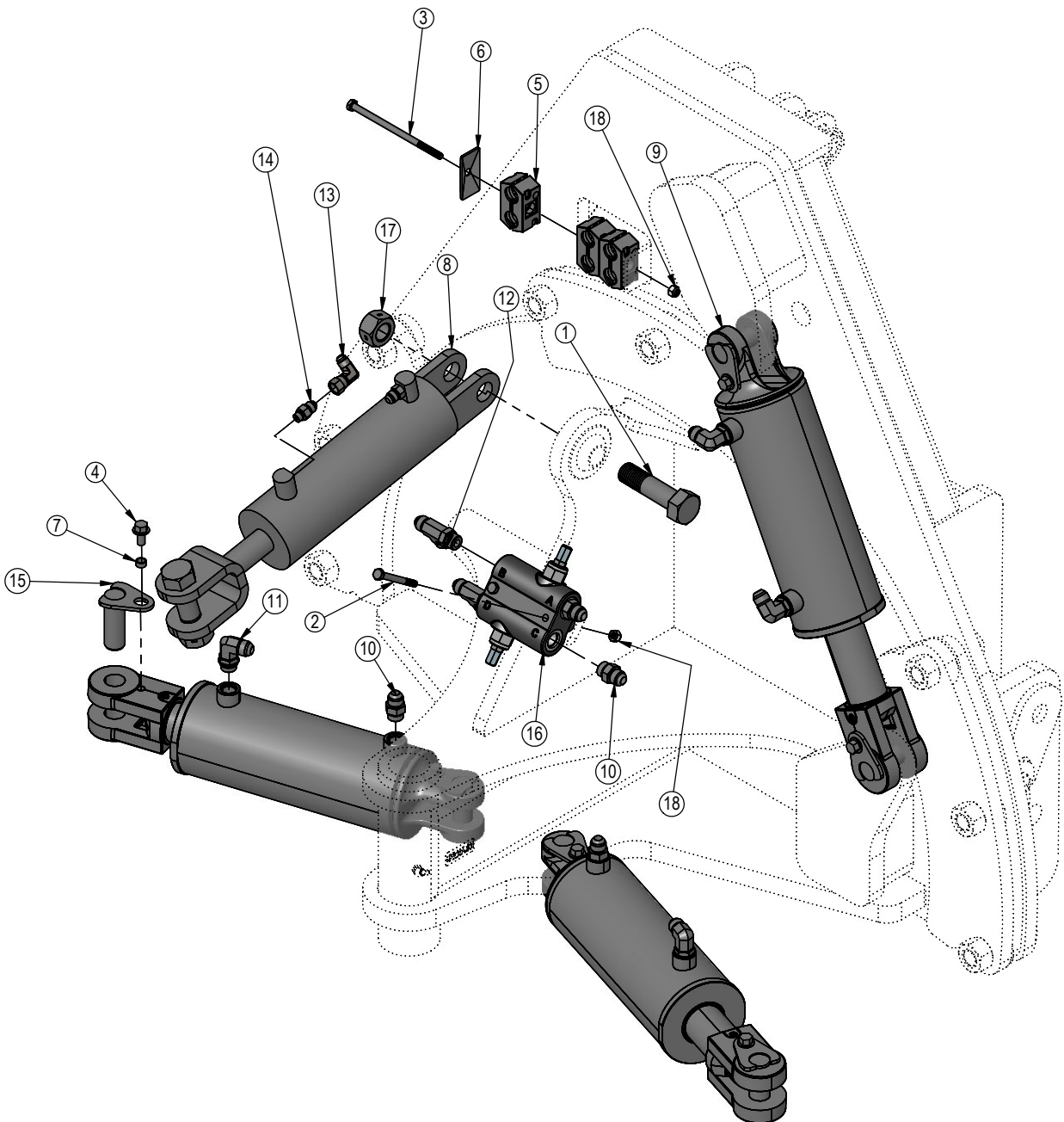




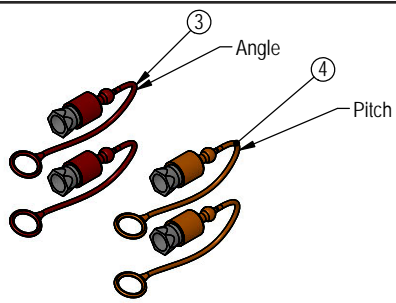
ITEM NO.	QTY.	PART NO.	DESCRIPTION
1	2	16-20126	1/2" x 1-1/2" Hex Bolt Gr 5 NC
2	1	16-20226	3/4" X 4" Hex Bolt Gr. 5 NC
3	1	16-20558	1" x 2" Hex Bolt Gr 8 NC
4	9	16-20563	1" x 3-1/4" Hex Bolt Gr 8 NC
5	6	19-7774	1" x 1" Spring Bushing
6	2	22-17796	Ball, Quick Claw Cat 2
7	2	27-2409	Pinch Decal (Hand)
8	1	27-40962	Warning Prop 65 Decal
9	3	27-9507	Decal, Grease
10	1	27-42496	Top Link Installation Decal
11	1	32-42880	Frame, Tilt
12	1	32-42895	Frame, Pitch
13	2	43-11667R1	Pin Weld
14	1	43-16764	7/16" x 1-3/4" Lynch Pin
15	1	43-42906	Pin, Angle
16	1	43-42920	Pin, Top Link
17	3	44-42876	Plate, Tilt
18	2	44-8490	Spacer
19	1	45-42865	Frame, Lift
20	1	57-16928	Plate, Washer
21	9	57-20749	1" Flat Washer
22	2	57-20794	1/2" Fender Washer
23	3	58-9371	45° 1/8" NPT Grease Fitting
24	9	70-20589	1" Hex Nut Gr 5 NC
25	1	70-20607	3/4" Center Lock Hex Nut Gr 2 NC
26	1	NA	Grouser Dozer Metal Serial Tag

DWG. NO.: 42929

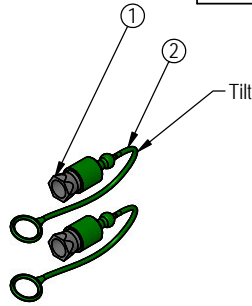
ITEM NO.	QTY.	PART NO.	DESCRIPTION
1	2	16-10165	1" x 3-3/4" Hex Bolt Gr.5 NC
2	2	16-20042	5/16" x 3" Gr.5 Hex Bolt NC
3	1	16-20050	5/16"X6" Gr.5 Hex Bolt
4	6	16-35C612	3/8" x 3/4" Flange Bolt
5	3	18-19311-03-P-087	Hose Clamp
6	1	18-19312-03	Twin Cover Plate
7	6	19-13577	NR Pin Spacer Clevis End
8	1	26-10160	3 x 7 Cylinder
9	3	26-34711	4 x 8 Hydraulic Cylinder
10	4	31-34040	Straight JIC x O-Ring
11	4	31-34050	Straight Thread Elbow 90° JIC x O-Ring
12	2	31-34070	Run Tee JIC x O-Ring
13	1	31-34099	Swivel Nut Elbow 90° JIC
14	2	31-6400-06-04	Straight JIC x O-Ring (6400-06-04)
15	6	43-13580	Pin Weld
16	1	56-7772	Relief Valve
17	2	70-20609	1" Hex Center Lock Nut Gr.2 NC
18	3	70-20611	5/16" Nyloc Hex Nut Gr. 5



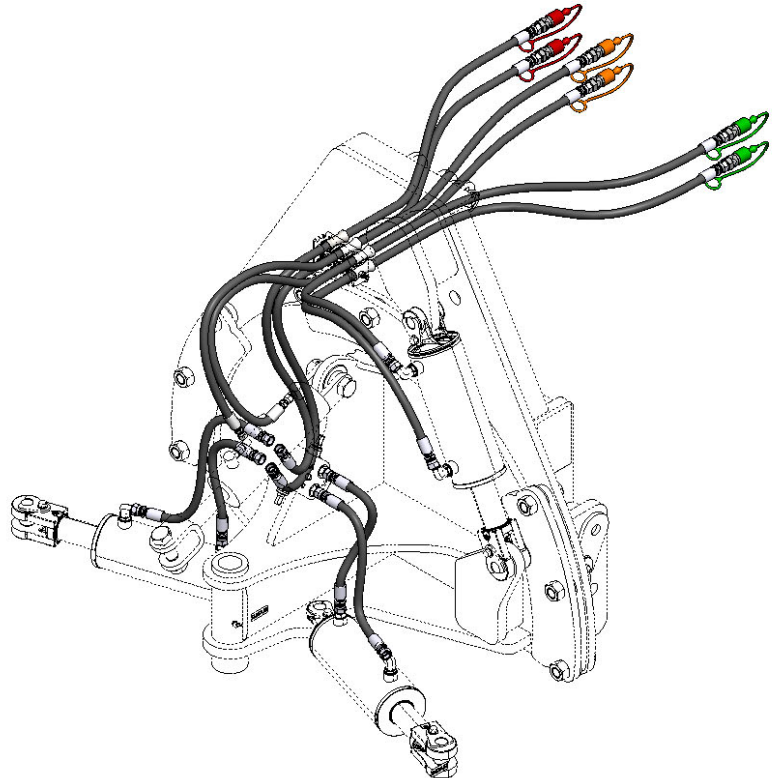
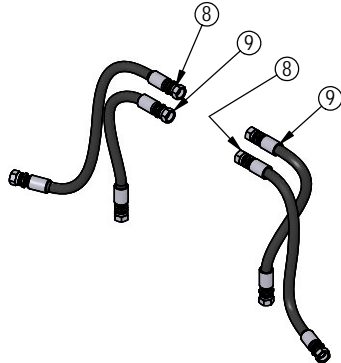
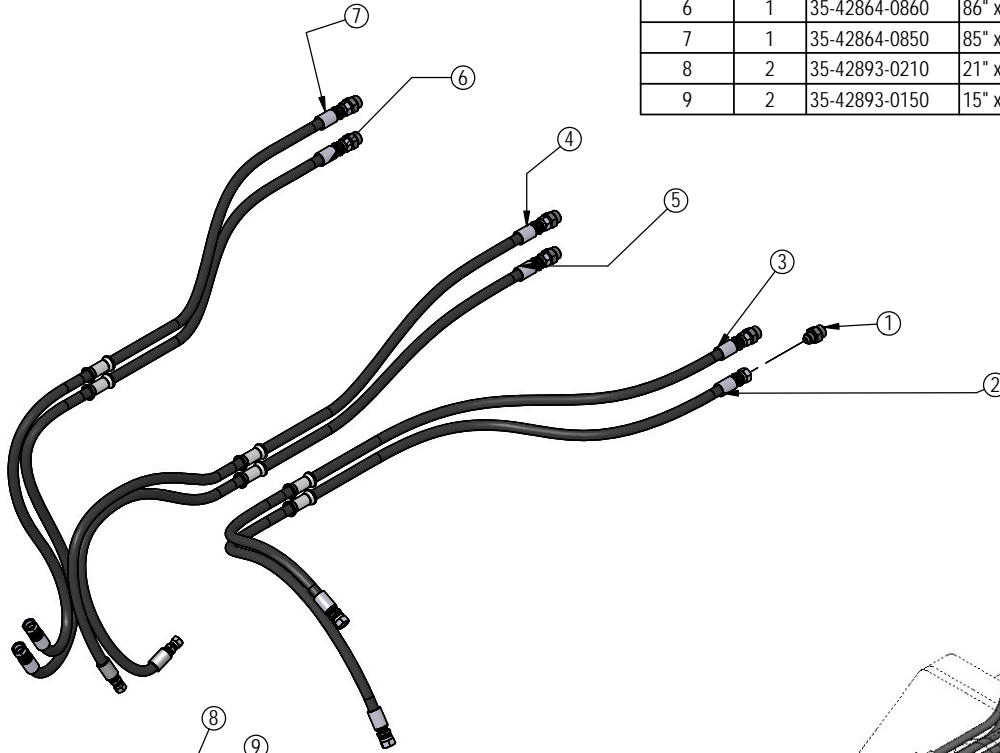
DWG. NO.: 42928



ITEM NO.	QTY.	PART NO.	DESCRIPTION
1	6	25-34342	Tappet Quick Coupler Male - Poppet Style
2	2	25-3453	Pioneer Dust Cap Tilt (Green)
3	2	25-3455	Pioneer Dust Cap Angle (Red)
4	2	25-3457	Pioneer Dust Cap Pitch (Orange)

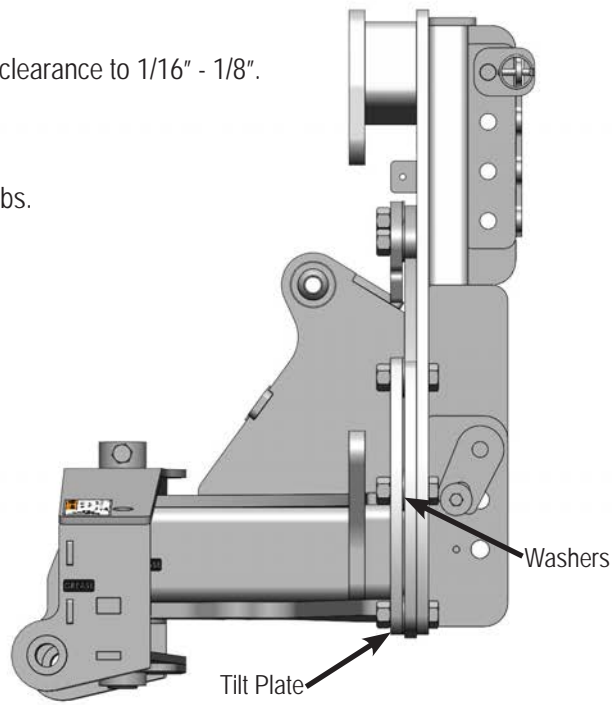


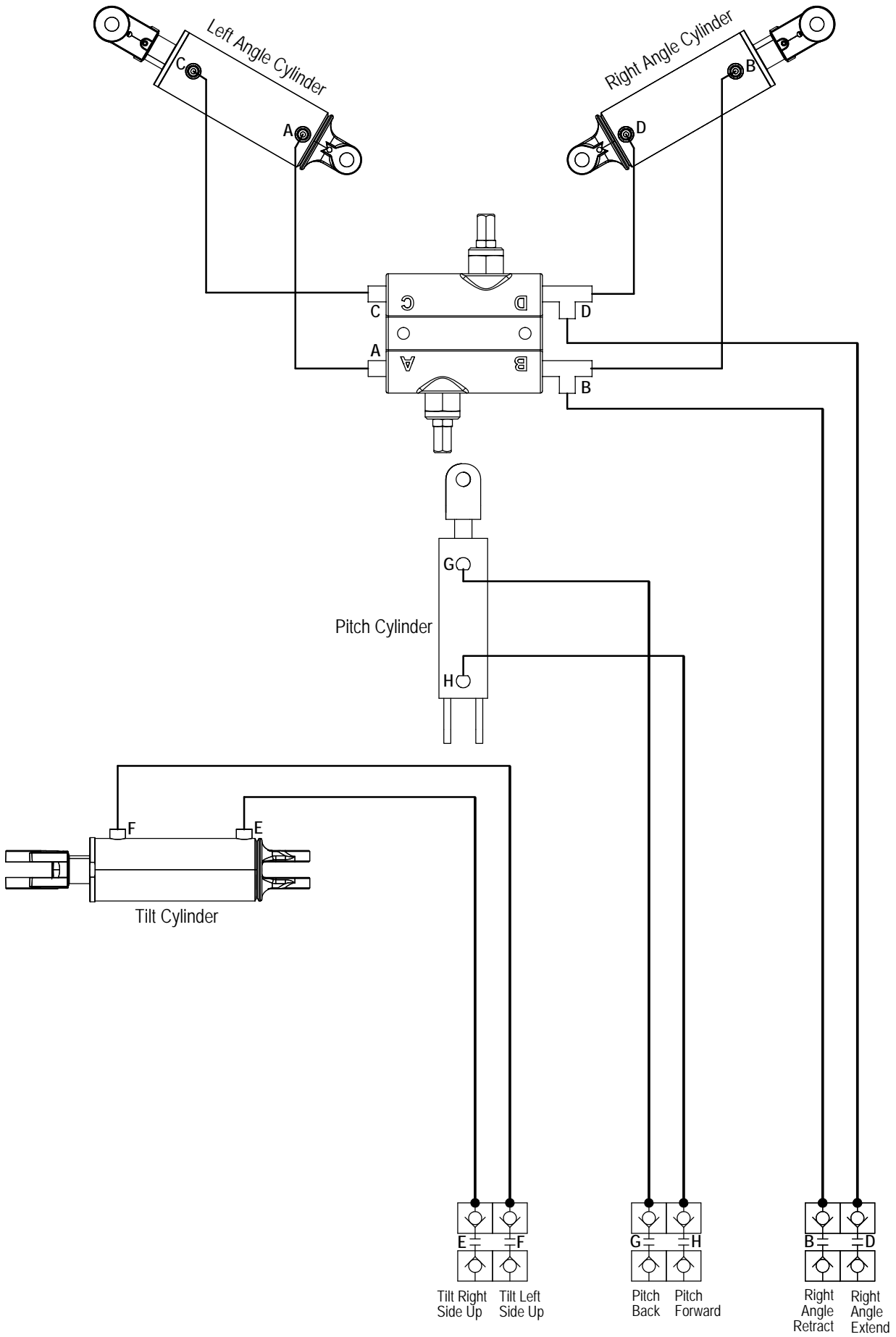
ITEM NO.	QTY.	PART NO.	DESCRIPTION
1	6	31-34041	Straight JIC x O-Ring
2	1	35-42864-0800	80" x 3/8" -8JIC/-8JIC Hose (w/Cordura & Collar)
3	1	35-42864-0725	72.5" x 3/8" -8JIC/-8JIC Hose (w/Cordura & Collar)
4	1	35-42894-0830	83" x 3/8" -6JIC/-8JIC Hose (w/Cordura & Collar)
5	1	35-42894-0860	86" x 3/8" -6JIC/-8JIC Hose (w/Cordura & Collar)
6	1	35-42864-0860	86" x 3/8" -8JIC/-8JIC Hose (w/Cordura & Collar)
7	1	35-42864-0850	85" x 3/8" -8JIC/-8JIC Hose (w/Cordura & Collar)
8	2	35-42893-0210	21" x 3/8" -8JIC/-8JIC Hose w/Cordura
9	2	35-42893-0150	15" x 3/8" -8JIC/-8JIC Hose w/Cordura



Note: Do not remove all of the bolts at the same time.

1. Remove 3 bolts from top tilt plate.
2. Add or remove washers as needed to adjust tilt-way clearance to 1/16" - 1/8".
3. Reinstall the bolts in the top tilt plate.
4. Follow Steps #1-3 for right tilt plate and left tilt plate.
5. Once tilt-way clearance is set, torque bolts to 640 ft-lbs.





Tractor Service Valve

Contact Us

As always, if you have any questions about your 1300 Grouser Blade or other products made by Grouser, feel free to contact us.

Grouser Products

755 2nd Ave NW - West Fargo, ND 58078

Phone: 1-800-747-6182

Fax: 1-701-282-8131

E-mail: grouser@grouser.com

Website: www.grouser.com

Improvements

Grouser Products Inc. is continually striving to improve its products. We reserve the right to change prices, specification, or equipment at any time without notice. We also reserve the right to make improvements or changes when it becomes practical and possible to do so without incurring any obligation to make changes or additions to the equipment sold previously.

Warranty

Grouser Products warrants to the original purchaser of each item that the product be free from defects in material and workmanship under normal use and service for a period of two years. If such equipment is found to be defective within two years, it is the obligation of Grouser Products under this warranty to repair or replace (exclusive of the cost of labor and transportation), any equipment or parts, in the judgment of Grouser Products to be defective in material or workmanship.

All equipment or parts claimed to be defective in material or workmanship must be made available for inspection at the place of business of a dealer authorized to handle the equipment covered by this warranty, or, upon request by Grouser Products, shipped to the Grouser Products factory in West Fargo, North Dakota. Grouser Products shall have no obligation to bear the cost of labor or transportation in connection with replacement or repair of any such defective parts in the setup process.

This warranty covers only defects in material and workmanship. It does not cover depreciation or damage caused by normal wear, accident, improper assembly, improper adjustments, improper maintenance including lack of proper lubrication, or improper use. Therefore, Grouser Products liability under this warranty shall not be effective or actionable unless the equipment is assembled, maintained and operated in accordance with the operating instructions accompanying the equipment. Grouser Products shall have no liability if the equipment has been altered or reworked without the written authorization of Grouser Products.

Grouser Products' parts, which are furnished under this warranty and properly installed, shall be warranted to the same extent as the original parts under this warranty if, and only if, such parts are found to be defective within the original warranty period covering the original equipment.

