



FH-440 Case Magnum Tier 3 & 4A

Mid Frame Standard Axle

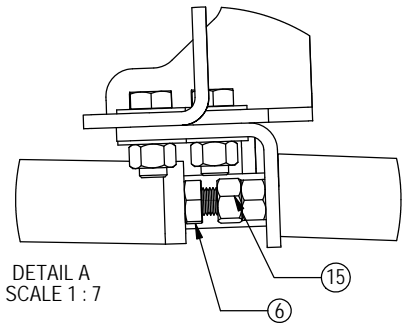
Undercarriage Installation Instructions

Caution:

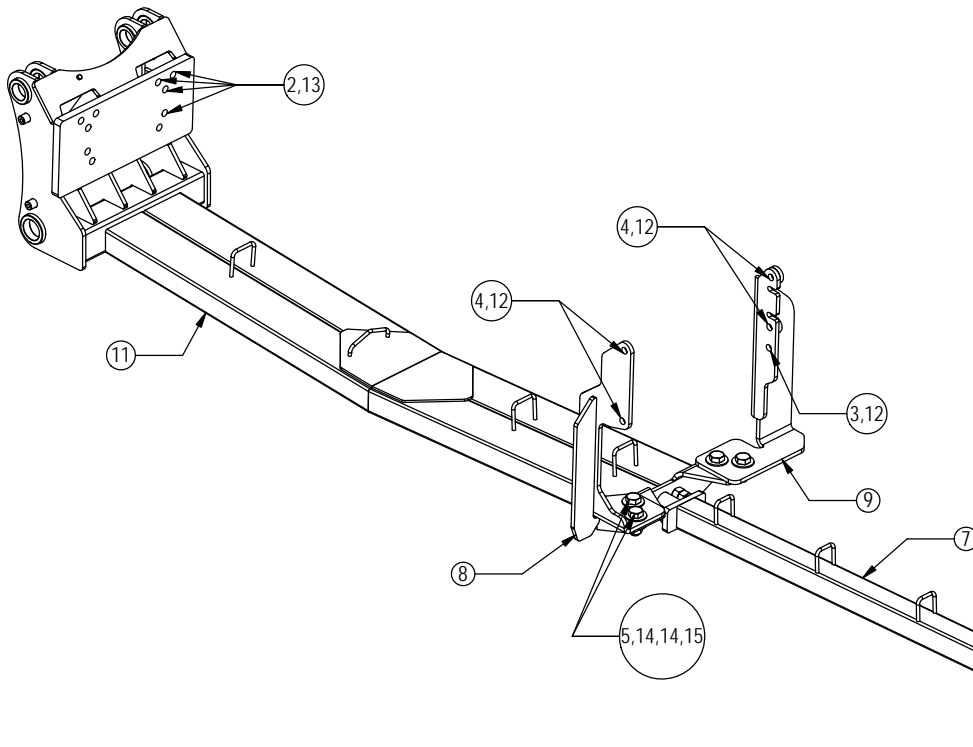
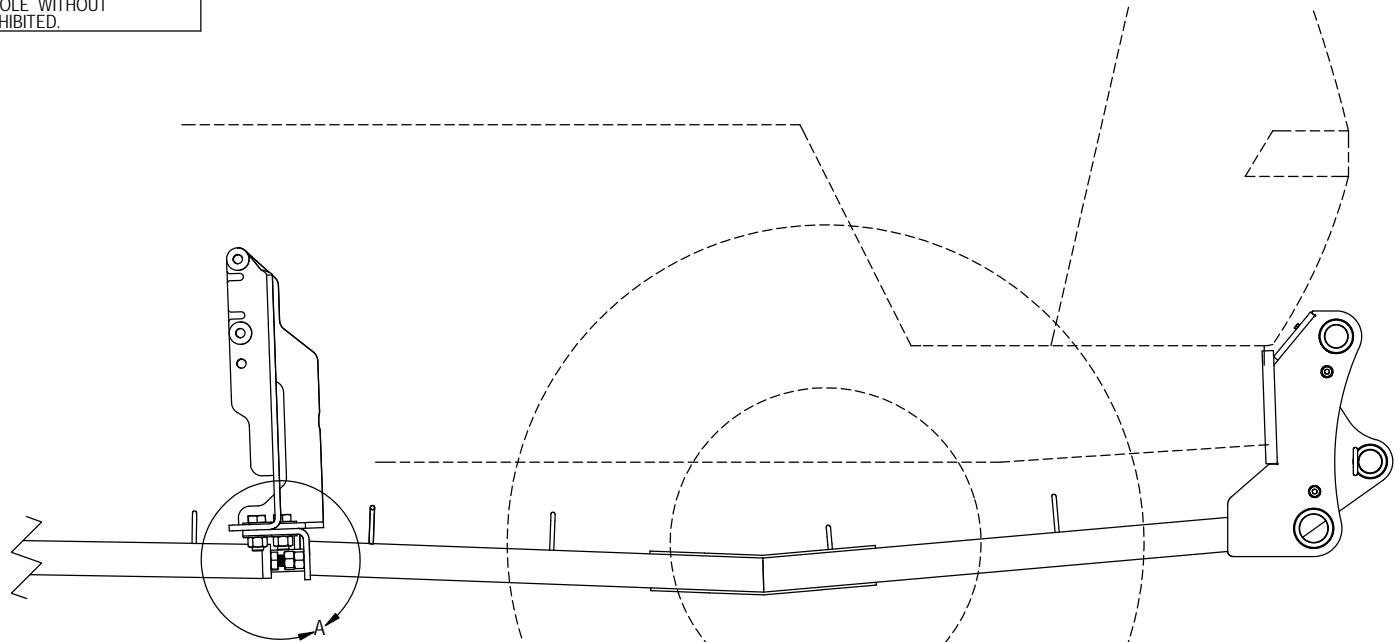
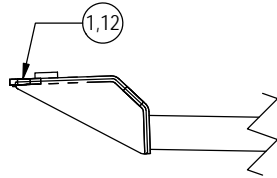
- Always use precaution when working around any equipment.
 - Always wear safety glasses.
 - Follow tractor manufacturer's safety guidelines when installing this product.
1. Read all instructions prior to installation.
 2. Remove weights and weight bracket from front of tractor if necessary.
 3. Remove the bolts from the radar. Insert the radar spacer (PN: 53-13335) and reattach the radar with 20mm x 100mm bolts (PN: 16-1877)
 4. Install 2 - 1" x 3" bolts (PN: 16-20562) and 2 - 1" nuts (PN: 70-20599) on the end of the undercarriage.
 5. Turn the 1" bolts in for installation. The bolts will be adjusted after the push pole is installed. See the attached diagram for proper installation of the bolts and nuts.
 6. Position the undercarriage (U/C) under the tractor and center with the frame of the tractor.
 7. Lift the U/C until the holes on the tractor line up with the holes on the U/C.
 8. At the front of the tractor, use 8 - 20mm x 70mm bolts (PN: 16-1876) with a 3/4" SAE flat washer (PN: 57-20757) on each bolt to attach the U/C to the front of the tractor. Tighten finger tight. See the attached diagram for any clarification.
 9. Use 2 - 20mm x 60mm bolts (PN: 16-2487) with a 3/4" flat washer (PN: 57-20747) on each bolt in the holes of the left side bracket (PN: 44-17625) to attach the left bracket to the tractor frame.
 10. Remove the ground boss from the right side of the tractor. The boss will be reinstalled in Step #12.
 11. Use 2 - 20mm x 60mm bolts (PN: 16-2487) with a 3/4" flat washer (PN: 57-20747) on each bolt in the top 2 holes of the right side bracket (PN: 44-17624) to attach the right bracket to the tractor frame.
 12. Use 1 - 20mm x 100mm bolt (PN: 16-1877) with the ground boss and a 3/4" flat washer (PN: 57-20747) through the bottom hole of the right side bracket to attach the right rail to the tractor frame. See the attached diagram for any clarification.
 13. Attach the left and right side brackets to the undercarriage with 2 - 1" bolts (PN: 16-20560), 4 - 1" heavy duty flat washers (PN: 57-20819), and 2 - 1" nuts (PN: 70-20599) for each side.
 14. Once all bolts are installed, torque the front 20mm bolts to 432 ft-lbs.
 15. Torque the 20mm bolts on the side rails to 432 ft-lbs.
 16. Torque the 1" bolts attaching the side brackets to the U/C to 903 ft-lbs.

- 17.** Carefully remove the front 2 bolts holding the drawbar bracket to the tractor rear axle housing. Discard the removed bolts
- 18.** Position the push pole (PN: 17-17635) under the tractor. See the attached diagram for the correct orientation of the push pole
- 19.** Slide the push pole onto the rod at the rear of the undercarriage.
- 20.** Lift the rear of the push pole up to the drawbar bracket. Support the rear of the push pole with a floor jack or block.
- 21.** Attach the rear of the push pole to the drawbar under the rear axle with 2 - 18mm bolts (PN: 16-1815080) and a 3/4" flat washer (PN: 57-20747) on each bolt. See attached diagram for clarification.
- 22.** Push the push pole back tight against the drawbar bracket.
- 23.** Torque the 18mm x 80mm bolts to 405 ft-lbs.
- 24.** Unscrew the two 1" x 3" bolts at the front of the push pole until they are tight against the push pole. Torque the 1" bolts to 90-95 ft-lbs.
- 25.** Tighten the nuts up tight against the push pole. Use the nuts to lock the bolts in place.
- 26.** After first 8 hours of use, re-torque all bolts.
- 27.** Check all fasteners regularly to ensure proper operation of equipment.

THE INFORMATION CONTAINED IN THIS DRAWING IS THE SOLE PROPERTY OF GROUSER PRODUCTS INC ANY REPRODUCTION IN PART OR WHOLE WITHOUT THE WRITTEN PERMISSION OF GROUSER PRODUCTS INC IS PROHIBITED.



DETAIL A
SCALE 1:7



* Parts Not Shown

ITEM NO.	QTY.	PART NO.	DESCRIPTION
1	2	16-1815080	18mm x 1.5mm x 80mm Metric Hex Bolt Gr 10.9
2	8	16-1876	20mm x 2.5mm x 70mm Metric Hex Bolt Gr 10.9
3	3	16-1877	20mm x 2.5mm x 100mm Metric Hex Bolt Gr 10.9
4	4	16-2487	20mm x 2.5mm x 60mm Metric Hex Bolt Gr 10.9
5	4	16-20560	1" x 2-1/2" Hex Bolt Gr 8 NC
6	2	16-20562	1" x 3" Hex Bolt Gr 8 NC
7	1	17-17635	FH-440 Case Magnum Mid Frame (Tier 3, 4A & 4b) Push Pole
8	1	44-17625	FH-440 Case Magnum Tier 3, Tier 4A/B Mid Frame Side Bracket, Left
9	1	44-17634	FH-440 Case Magnum Tier 3, Tier 4A/B Mid Frame Side Bracket, Right
10*	1	53-13335	Mid Frame Magnum Radar Spacer Tube
11	1	54-18325	FH-440 Case Magnum Tier 3, Tier 4A/B Mid Frame Std. Axle UC (2.0)
12	7	57-20747	3/4" Flat Washer
13	8	57-20757	3/4" SAE Hardened Flat Washer - 1-1/2" OD
14	8	57-20819	1" Flat Washer Heavy Duty Gr 8 (USS)
15	6	70-20599	1" Hex Nut Gr 8 NC



GROUSER PRODUCTS INC.

755 2nd Ave NW Phone 701.282.7710
West Fargo, ND 58078 Fax 701.282.8131
WWW.GROUSER.COM

TITLE: FH-440 Magnum T3 & T4
Mid Frame Std Axle

Date: 3/25/2015

DWG. NO.: 18325-A